

# Effective partnerships towards realizing the data ecosystem for sustainable development

Keran Wang

Chief, Space Applications Section  
ICT and Disaster Risk Reduction Division  
UNESCAP

Deqing, China, 22 October 2019

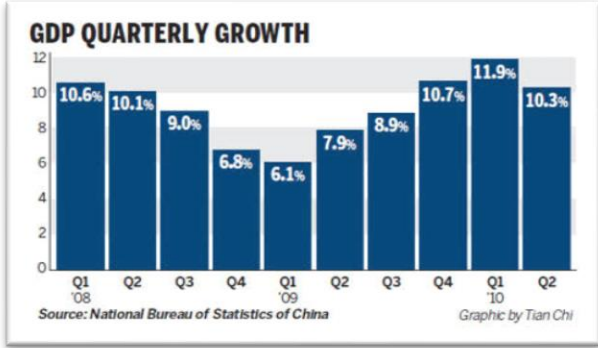


UN-GGIM-AP

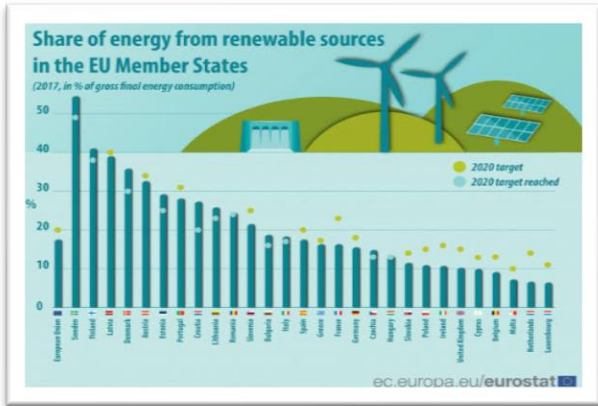
Regional Committee of United Nations  
Global Geospatial Information Management  
for Asia and the Pacific

[un-ggim-ap.org](http://un-ggim-ap.org)

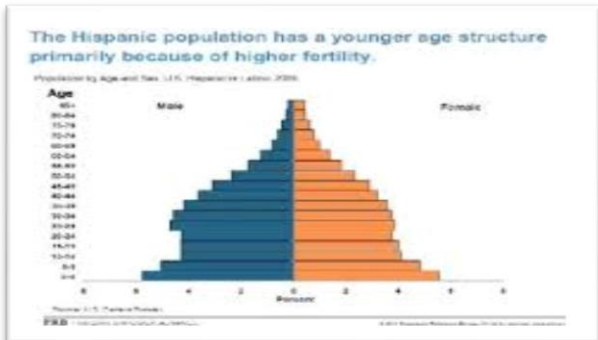
# ECONOMY



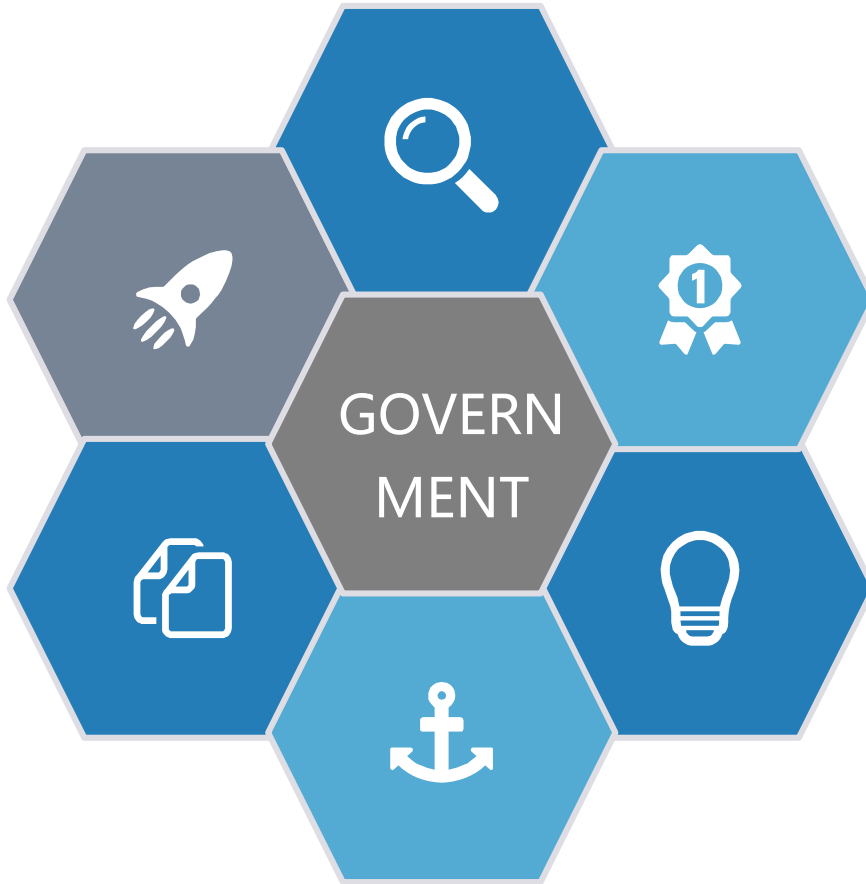
# ENERGY



# POPULATION



## Different Departments



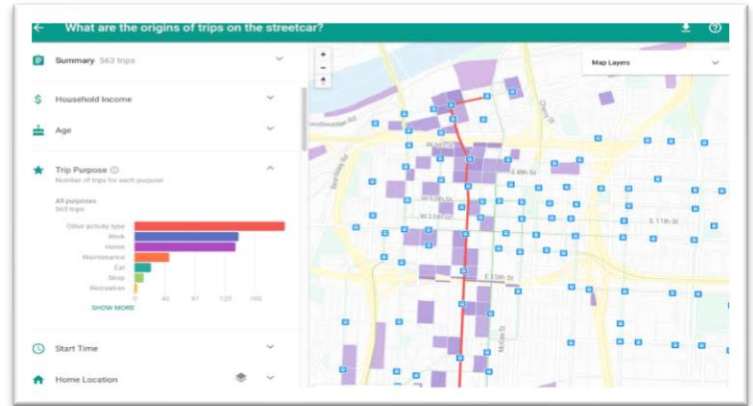
## Different Data Formats



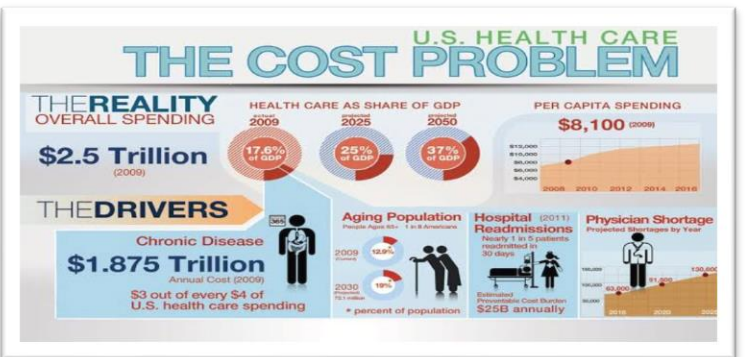
# AGRICULTURE



# TRANSPORTATION



# HEALTH



# Many countries or cities build DATA-SHARING PLATFORM

The screenshot shows the 'LONDON DATASTORE' website. At the top, there is a navigation bar with links for 'Data', 'Blog', 'Analysis', 'Area Profiles', 'Collaboration', and 'About', along with a 'Login' button. Below the navigation is a large banner image of the Tower Bridge in London. A search bar is overlaid on the banner with the text 'Search 867 datasets...'. Below the banner, there is a section titled 'Updated 19 hours ago: Bridges, tunnels, road barriers - height restrictions'. This is followed by a row of eight circular icons representing different data categories: 'JOBS AND ECONOMY', 'TRANSPORT', 'ENVIRONMENT', 'COMMUNITY SAFETY', 'HOUSING', 'COMMUNITIES', 'HEALTH', and 'LONDON AS A WORLD CITY'. At the bottom of the screenshot, there is a 'DataSF' logo and a navigation bar with links for 'Explore', 'Browse Data', 'Open Data Stats', 'Developers', and 'Sign In'. Below this, there is a grid of ten icons representing various data categories: 'Economy & Community', 'City Management & Ethics', 'Transportation', 'Public Safety', 'Health & Social Services', 'Geographic Locations & Boundaries', 'Energy & Environment', 'Housing & Buildings', 'City Infrastructure', and 'Culture and Recreation'.

## 4 Big Cities Launch Shared Data Platform

San Francisco, Chicago, Seattle and New York launch new open data community on federal Data.gov.

BY NOELLE KNELL / AUGUST 1, 2012

The infographic is titled 'Health & Wellness at The Consumer Goods Forum'. It features several charts and statistics. The main chart is a bar graph showing 'Progress against Resolutions' for three categories: 'Total of 100 resolutions', 'Total of 100 resolutions', and 'Total of 100 resolutions'. The chart shows that 50% of resolutions have been completed. To the right, there are four circular icons representing different areas: 'Economic growth', 'Jobs of the future', 'Economic growth', and 'Economic growth'. Below these icons, there are statistics: '2.3 billion', '150,000', and '1.3 million'. At the bottom of the infographic, there is a large black and white icon of a document with the letters 'CSV' on it, and a world map to its right.

JUST A DATA CONTAINER?

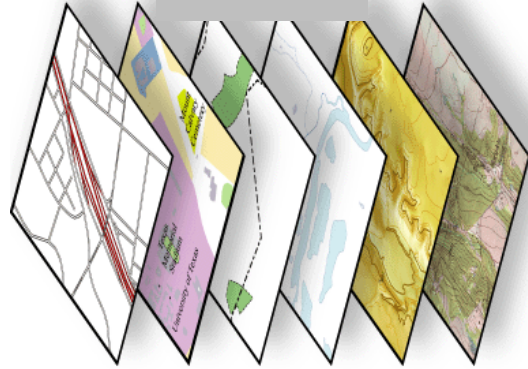


# ONEMAP----yield more values rather than displaying

Capture



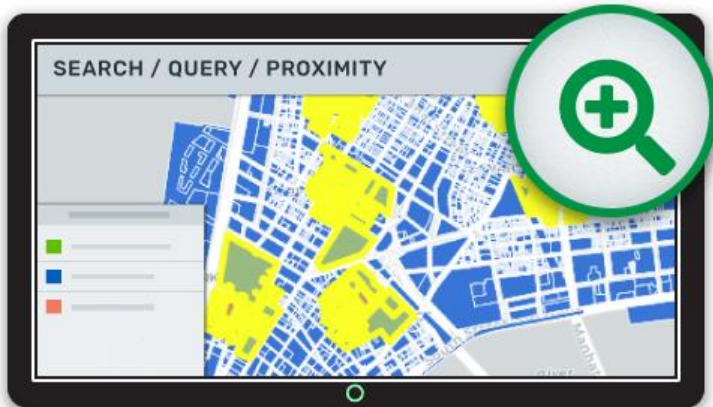
Store



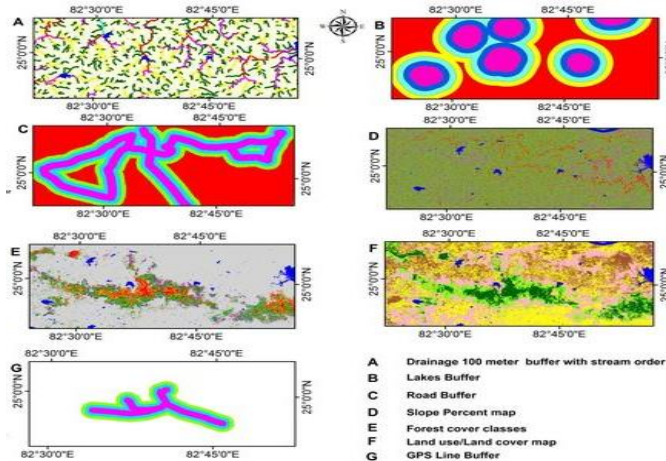
Display



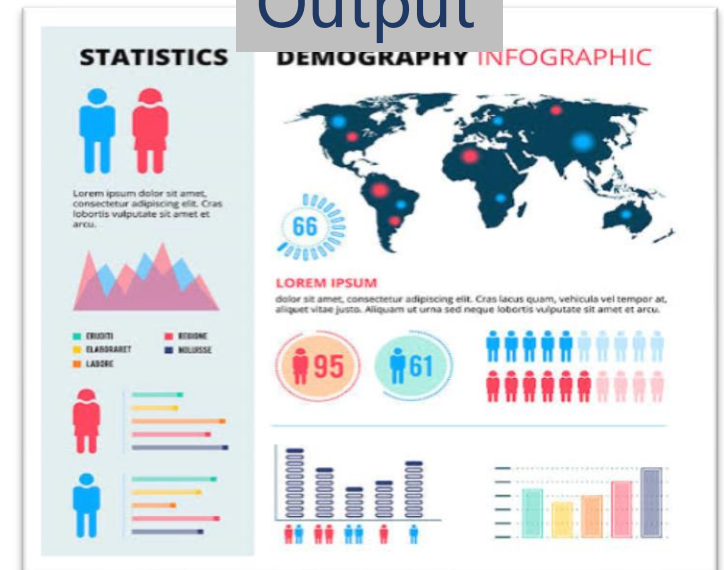
Query



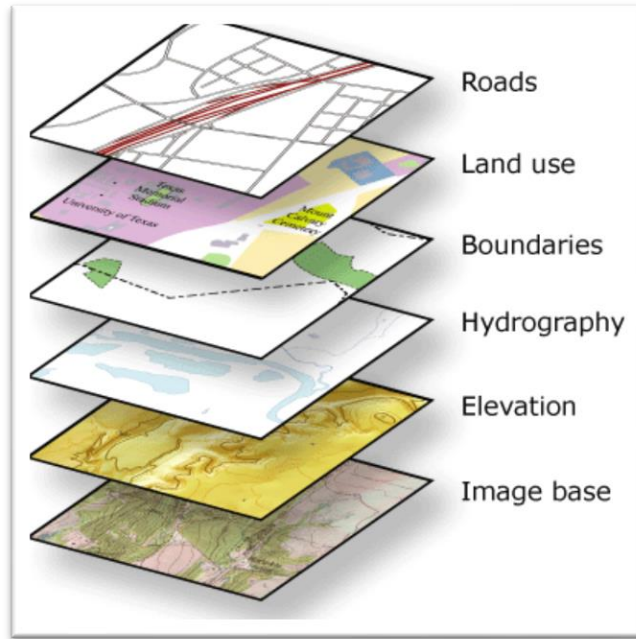
Analyze



Output

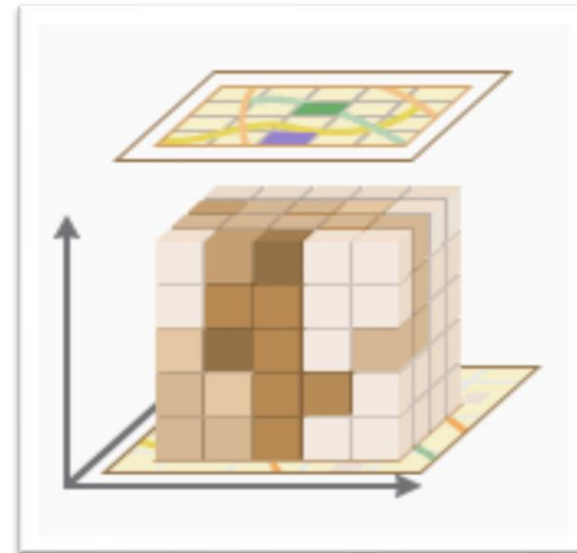


# ONEMAP & DATA CUBE



- Time variation
- Easy to monitor in time and space simultaneously

- Uniform data format/standard
- Data sharing
- Reduce data gap



## IGIF Strategic Pathway 7: Partnerships

Enhance stakeholder engagement and partnerships to deliver the data ecosystem for sustainable development

(Target 17.17 under Goal 17)

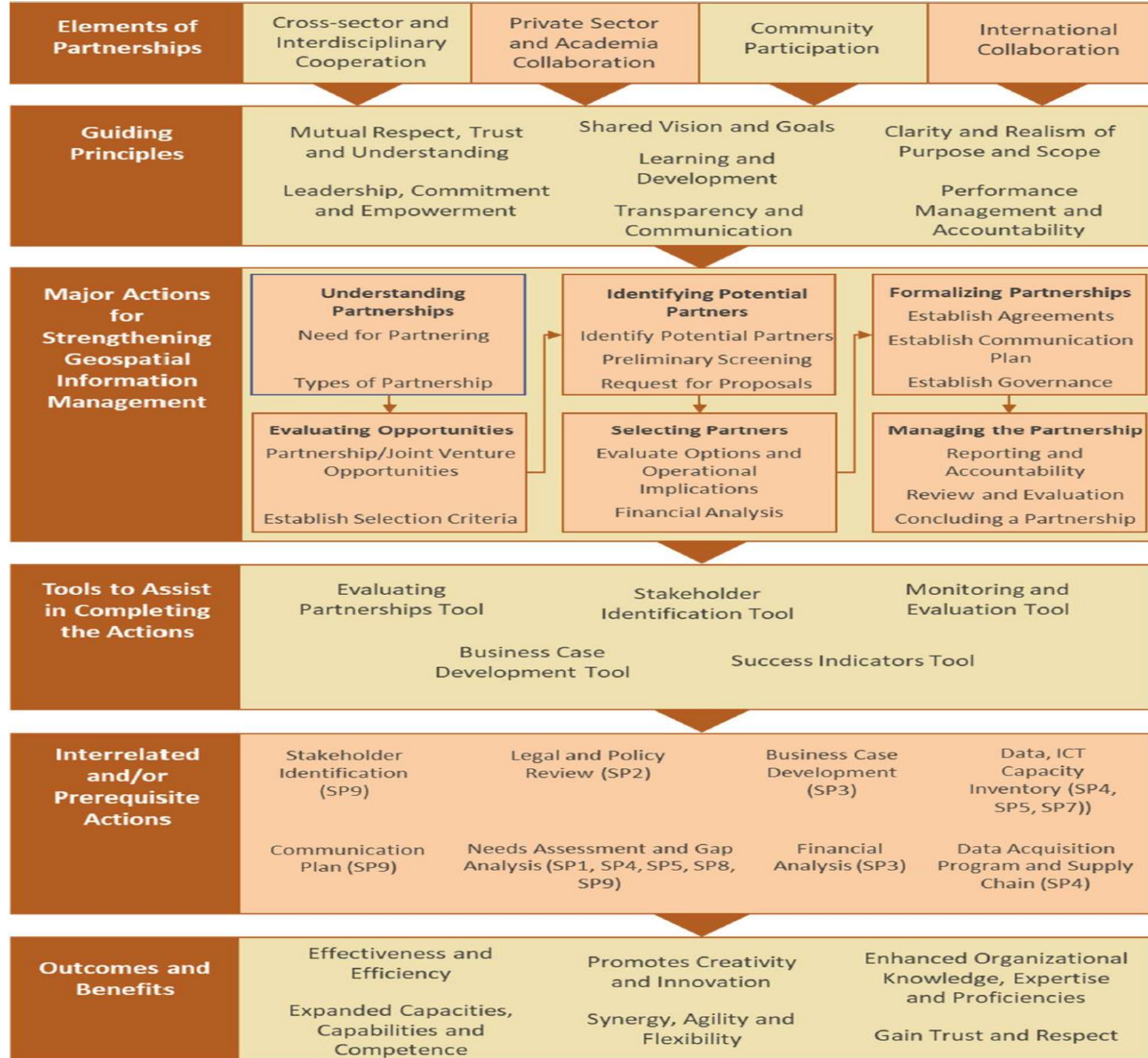
- Establish **cross-sector and interdisciplinary cooperation, coordination and collaboration** with all levels of government, the geospatial industry, private sector, academia, and the international community, as an important premise to developing and sustaining an enduring nationally integrated geospatial information framework and data ecosystem.
- Create and sustain **the value of geospatial information through a culture based on inclusion, trusted partnerships** and strategic alliances that recognize common needs, aspirations and goals, towards achieving national priorities and outcomes.

# Partnerships should always be actively explored

- Governments and Parliamentarians
- International Aid Agencies
- Donors and Foundations
- NGOs and Civil Society
- Academic and research institutions
- Private sectors
- Financing Institutions for Country Development

- With a specific target to **encourage and promote effective public, public-private and civil society partnerships**, building on the experience and resourcing strategies of partnerships
- At all levels – **international, regional, national and local**
- Bring different but **complementary skills, experiences, knowledge and resources** to an initiative or programme to establish, strengthen or organize geospatial information management arrangements.

The overall structure for partnerships - showing the four key elements, guiding principles, actions and interrelated actions, and the tools provided in the appendices to support the achievement of outcomes.

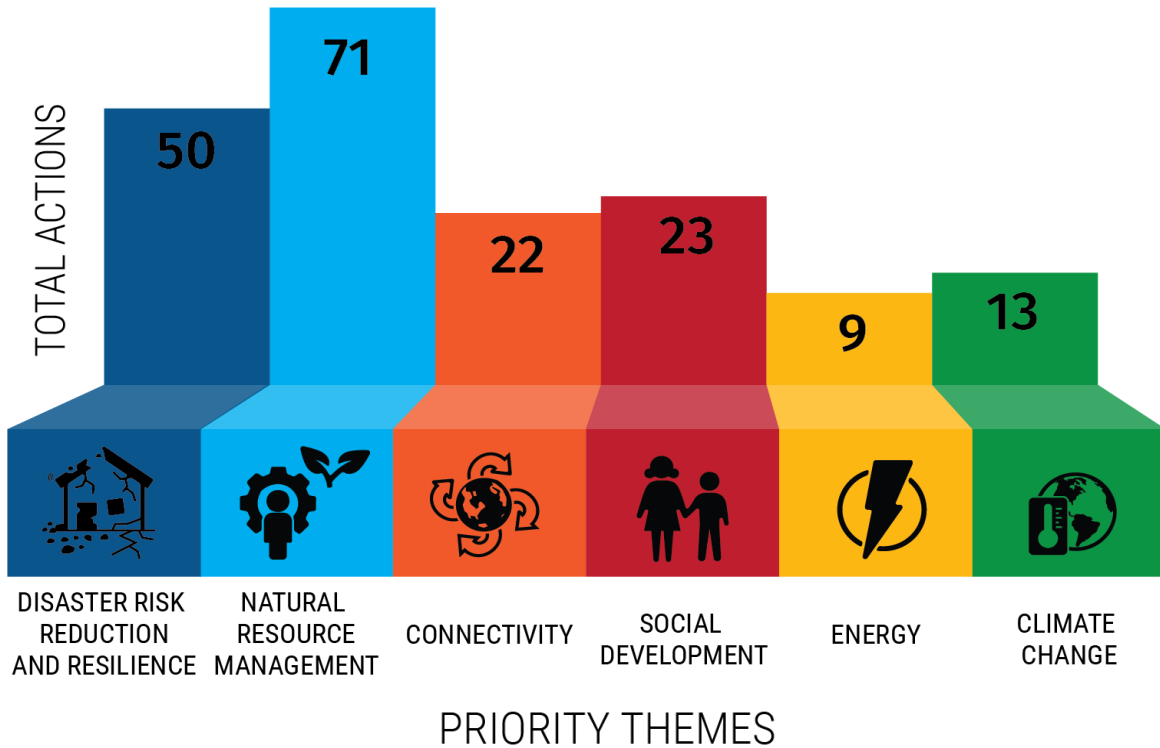




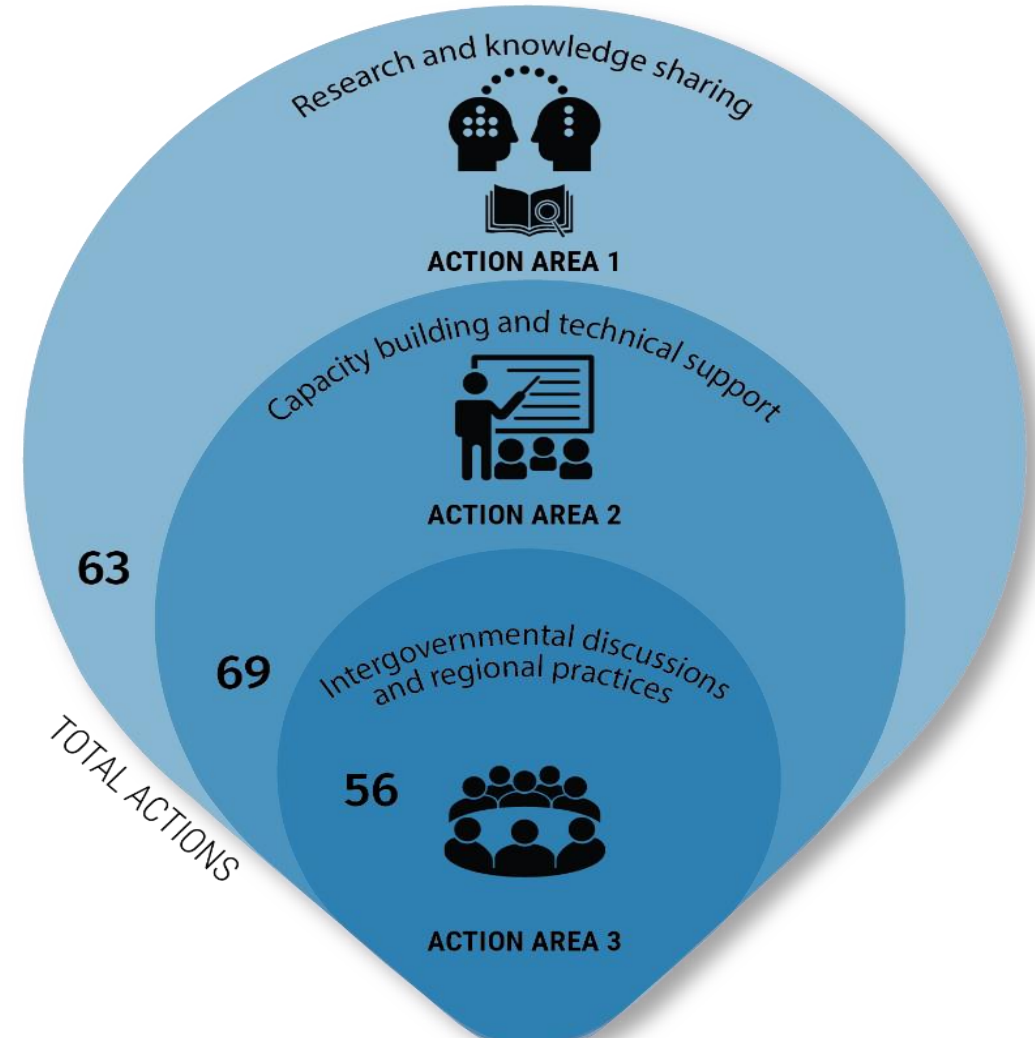
## SPACE+ initiatives

- ❑ Leveraging **innovations in digitization**, cloud computing, artificial intelligence, big data and IoT
- ❑ Engaging **end-users in multiple sectors** including youth and the private sector
- ❑ Bridging **national demands/end users** with **regional information/service providers**
- ❑ Strengthening implementation through **enhanced partnership** with global stakeholders
- ❑ Guiding national sustainable development and **stimulating regional cooperation** in support of global initiatives
- ❑ Contributing to **global agendas**, such as the UNISPACE+50 and the 2030 Agenda for Sustainable Development

## TOTAL ACTIONS FOR THE 6 PRIORITY THEMES



## IMPLEMENTATION MODALITIES



Asia-Pacific Plan of Action on Space  
Applications for Sustainable Development  
(2018–2030)



- 188 activities at the **international, regional and national levels**, focusing on the six priority areas identified in the regional road map.
- Promotes **partnerships and collaboration** between member States, United Nations agencies, intergovernmental mechanisms, and international and technical organizations in the implementation of the Plan.
- Actions are **not designed to be implemented by one entity alone**, rather they are designed to guide national actions and promote regional cooperation in support of global initiatives.
- The Plan also **foresees enhanced partnerships**, at the regional level, between existing Regional Space Applications Programme members, intergovernmental mechanisms and international and technical organizations.
- Implementation of the Plan will **contribute to the harmonization of regional actions and aims to reduce duplication of efforts**, enhance cooperation and strengthen partnerships. It is **a collective action** between member States, the United Nations system, regional and international institutions, including the private sector and other stakeholders.

# Summary

- Strategic partnerships are collaborative relationships between organizations that have a shared purpose and goals
- Bring diversity that can increase organizational knowledge and enhance geospatial data collection methods
- Increase development capacity through sharing, learning and knowledge transfer
- Enhance organizational knowledge, expertise and proficiencies and expand capability through complimentary resources
- Facilitate agility and flexibility in digital transformation and reform
- Empower creativity and innovation through collaboration on mutual endeavors.





In DATA Society  
YOU contribute more, YOU gain more  
NO one can do it alone, let us work together!



UN-GGIM-AP

Regional Committee of United Nations  
Global Geospatial Information Management  
for Asia and the Pacific

[un-ggim-ap.org](http://un-ggim-ap.org)